



# Swansea Community Meeting

April 6, 2023

**Prysmian**  
Group

GENESIS STUDIOS LLC





# Meeting Agenda

---

- Proponent and Project Team Overview
- Project Overview & Benefits
- Project Overview & Status
- Permits and Filings
- Community Outreach
- Question & Answer/Discussion

# Meet the Proponent & Advisors

---



## Corporate Leadership Team

- Alberto Boffelli
- Mario Gallo
- Jim Allen



## Government Affairs

- Jen Gorke
- Jennifer Benson



## Local Liaison

- Paul Vigeant



## Economic Incentives

- Kathy Mussio

# Meet the Permitting & Engineering Project Team

---



Entitlement & Technical  
Permitting, Site Civil  
Engineering, Natural Resources



Legal Permitting/Zoning



Design Lead & Structural Engineer



Maritime Engineering



Project Mechanical, Electrical,  
Plumbing and Security



Project Architects & Sustainability



Bright ideas.  
Sustainable change.

Onshore and Marine Environmental and  
Geotechnical Consulting

# A truly global group leader in the cable industry

A global footprint ensuring higher diversification by portfolio and geographical area



**€+12BN**

Sales



**29,000**

Employees



**50**

Countries  
worldwide



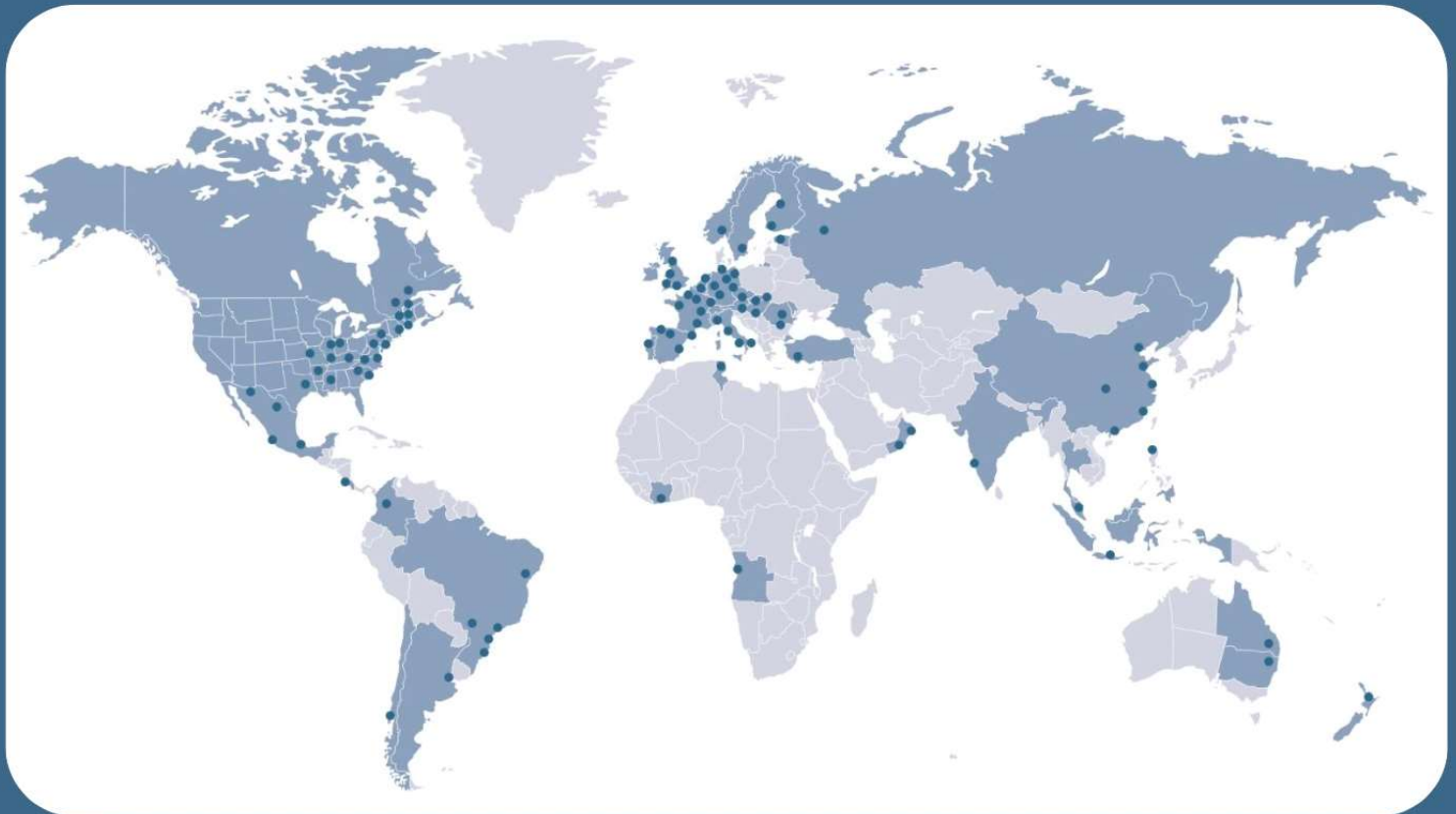
**108**

plants



**26**

R&D Centres



Cikampok



# Our Global Footprint: Prysmian Group's Major Cable Factories



**Arco Felice (Italy).** Founded in 1952. Main Center of Excellence for submarine cables. Extrude and paper AC & DC cables.



**Pikkala (Finland).** Founded in 1961. Medium-high voltage Center of Excellence for land and submarine cables. Extruded AC and DC cables.



**Nordenham (Germany).** Expanded in 2007 after the acquisition of General Cable. Medium-high voltage Center of Excellence for submarine cables. Ability to product optical submarine cables.



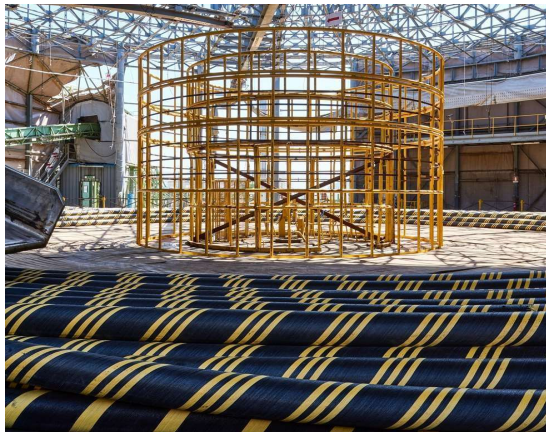
**Drammen (Norway).** Founded in 1968. EXPLE, EPR, MV, HVAC, up to 66kv.

# Prysmian Group: Our Products & Vessels

## HVAC Cable Technologies



## HVDC Cable Technologies



## Specialized Vessels



Giulio Verne



Ulisse



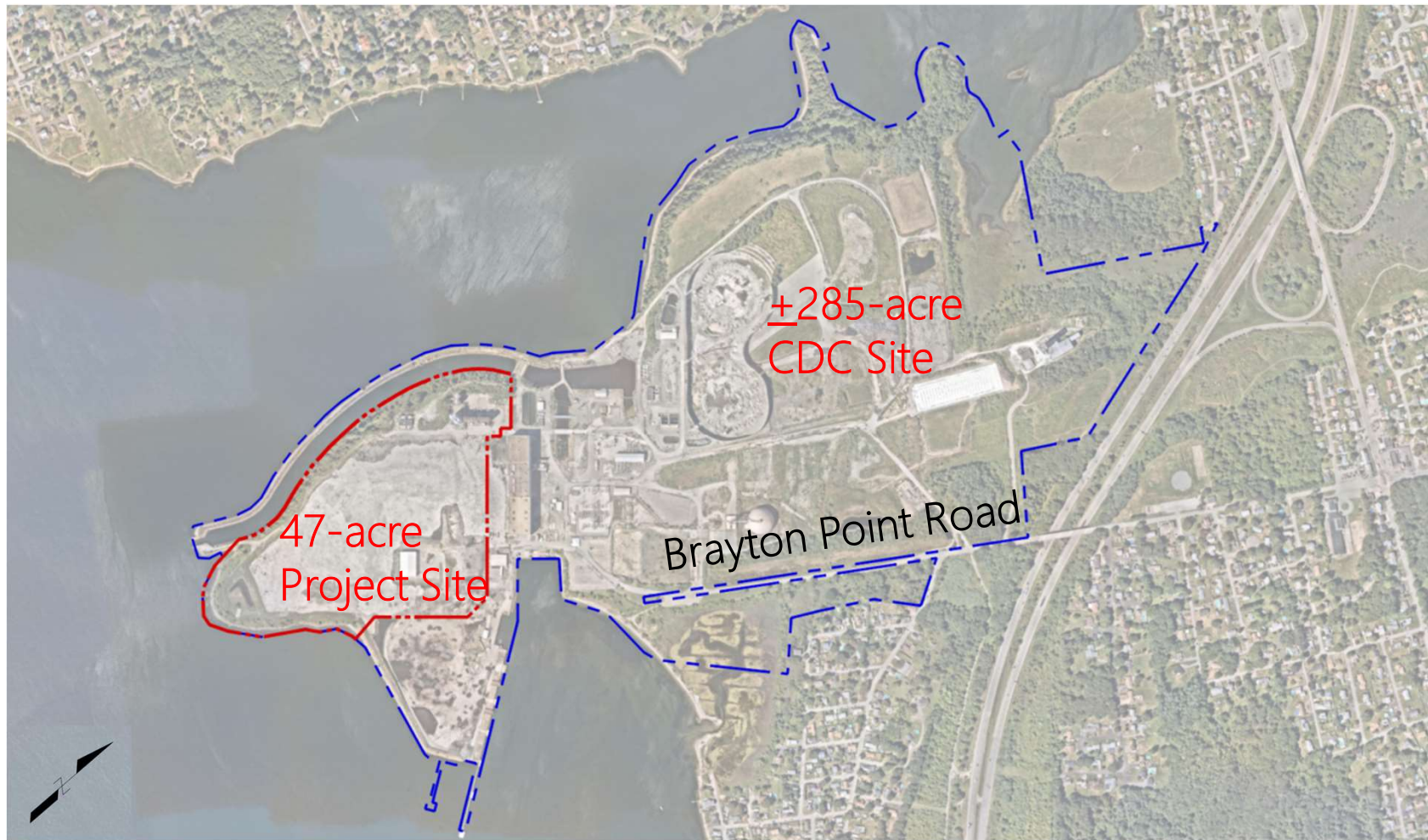
Cable Enterprise



Leonardo Da Vinci



## Prysmian Project Site





# Brayton Point Manufacturing Facility Overview

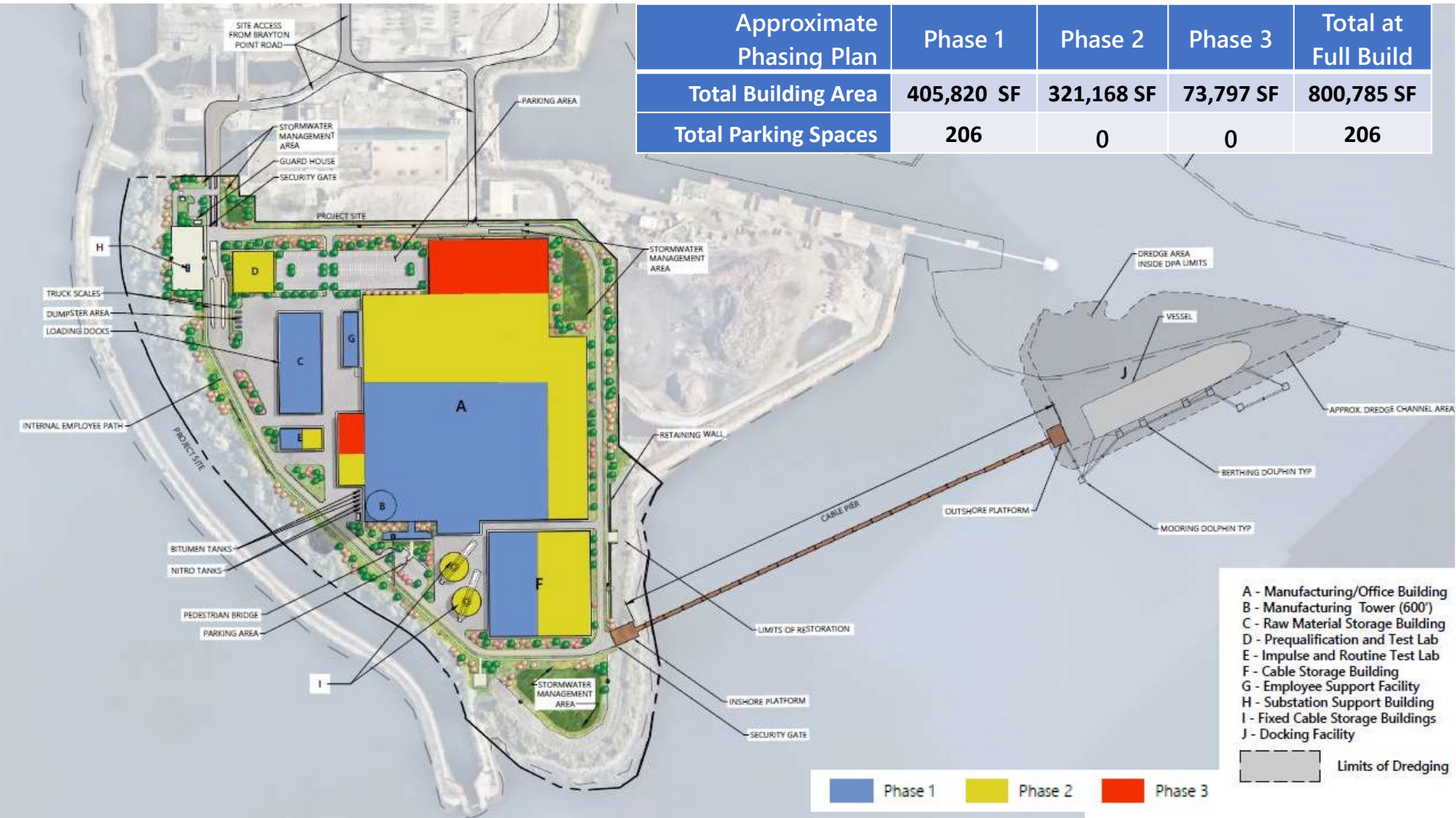
---

- Purchasing the 47-acre site
- ±800,785 Total Square Feet to be constructed in three phases
- ±206 Parking Spaces
- Key Components:
  - Submarine Cable Manufacturing Facility
  - Approximate\_600-foot Manufacturing Tower
  - Docking Facility
  - On- and Off-Site Improvements
- Marine Industrial Use is Designated Port Area-Compliant
- Will service offshore wind projects beginning in 2026/2027





Approximate Phasing Plan	Phase 1	Phase 2	Phase 3	Total at Full Build
Total Building Area	405,820 SF	321,168 SF	73,797 SF	800,785 SF
Total Parking Spaces	206	0	0	206



# Project Benefits

- ❖ Supports shift to clean renewable energy, offshore wind
- ❖ Supports State and regional clean energy/GHG emissions reductions targets
- ❖ Creates 80-100 construction jobs (in Phase 1)
- ❖ Creates  $\pm 360$  local high-skilled permanent jobs (full build)
- ❖ Establishes partnerships with higher education institutions for job training
- ❖ Generates significant local property tax revenue and state income tax revenue
- ❖ Targets most environmentally sustainable design, including a 2.6 MW on-site solar array



# Estimated Project Timeline

Milestone	2022				2023				2024				2025				2026			
	Q1	Q2	Q3	Q4	Q1	Q2	Q3	Q4	Q1	Q2	Q3	Q4	Q1	Q2	Q3	Q4	Q1	Q2	Q3	Q4
Agency Coordination																				
Project Design																				
State Environmental Review (MEPA)*																				
Somerset Local Approvals																				
Fall River Conservation Commission Approval**																				
State Environmental Permitting																				
MassDEP Water Quality Certification																				
MassDEP Chapter 91 License																				
US Army of Corps of Engineers																				
Dredging & Marine Construction																				
Early Foundation Construction																				
Landside Construction																				
Waterside Construction																				
Operational																				

◆ Permit/Approval

\*Massachusetts Environmental Policy Act

\*\*Navigational Light

# Why is State Environmental Review Required?

- ❖ **State Agency Actions (Permits):**

- ❖ Chapter 91 License from MassDEP Waterways Program
- ❖ 401 Water Quality Certification from MassDEP

- ❖ **MEPA Review Thresholds requiring a Mandatory EIR:**

- ❖ Alteration of ten or more acres of any other wetland resource areas (floodplain and land under the ocean)
- ❖ Located within one mile of Environmental Justice populations



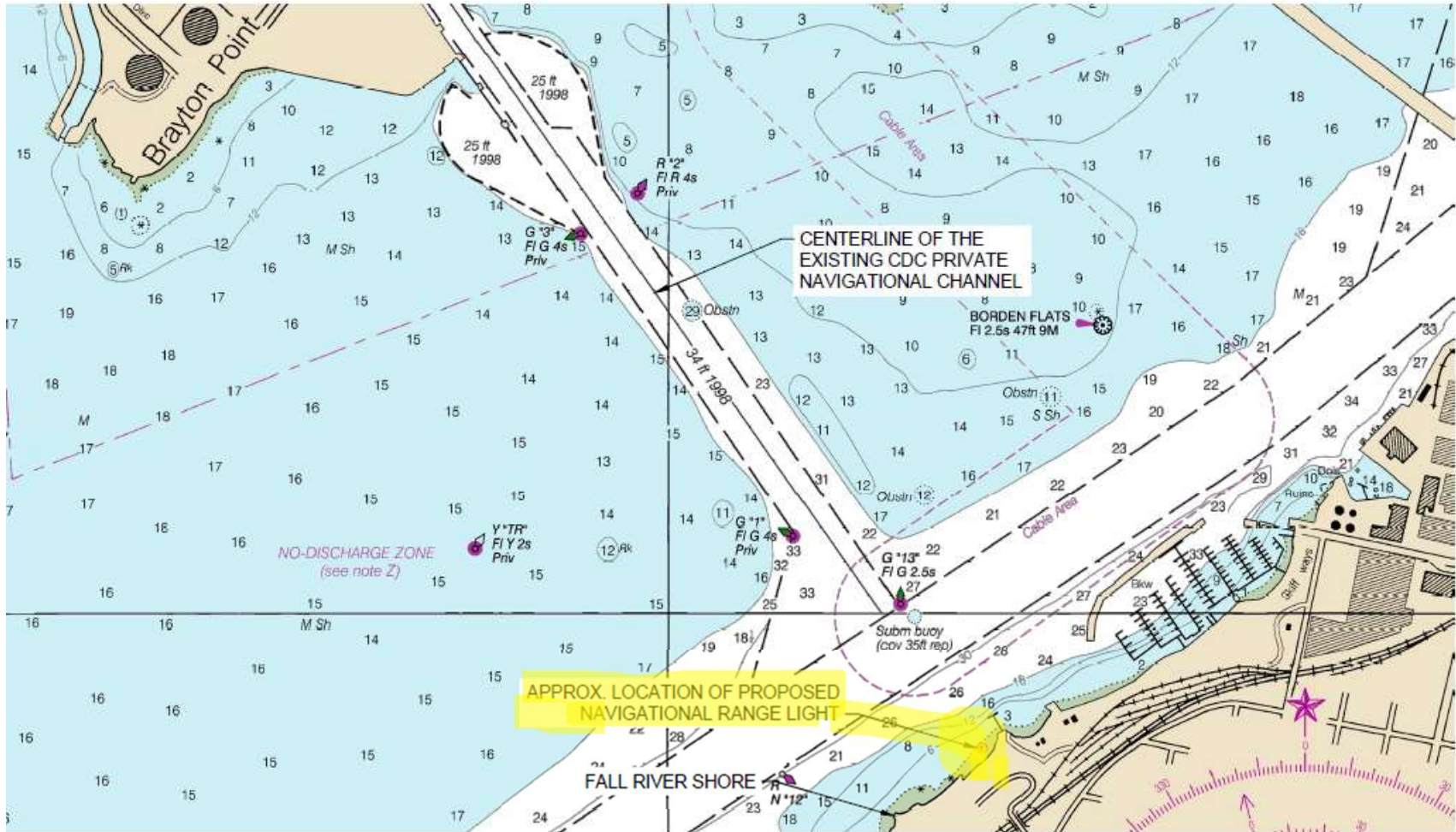


## Agency Outreach



- Federal
  - US Army Corps of Engineers
  - National Marine Fisheries Service
  - Federal Aviation Administration
- Commonwealth of Massachusetts
  - MEPA & Environmental Justice offices
  - Department of Environmental Protection
  - Division of Marine Fisheries
  - Office of Coastal Zone Management
  - Department of Energy Resources
  - Department of Transportation
- Town of Somerset
  - Selectboard
  - Town Administrator
  - Planning Board
  - Zoning Board
  - Conservation Commission
- City of Fall River
  - Conservation Commission

# Navigation Range Light



## FEIR Contents & Findings

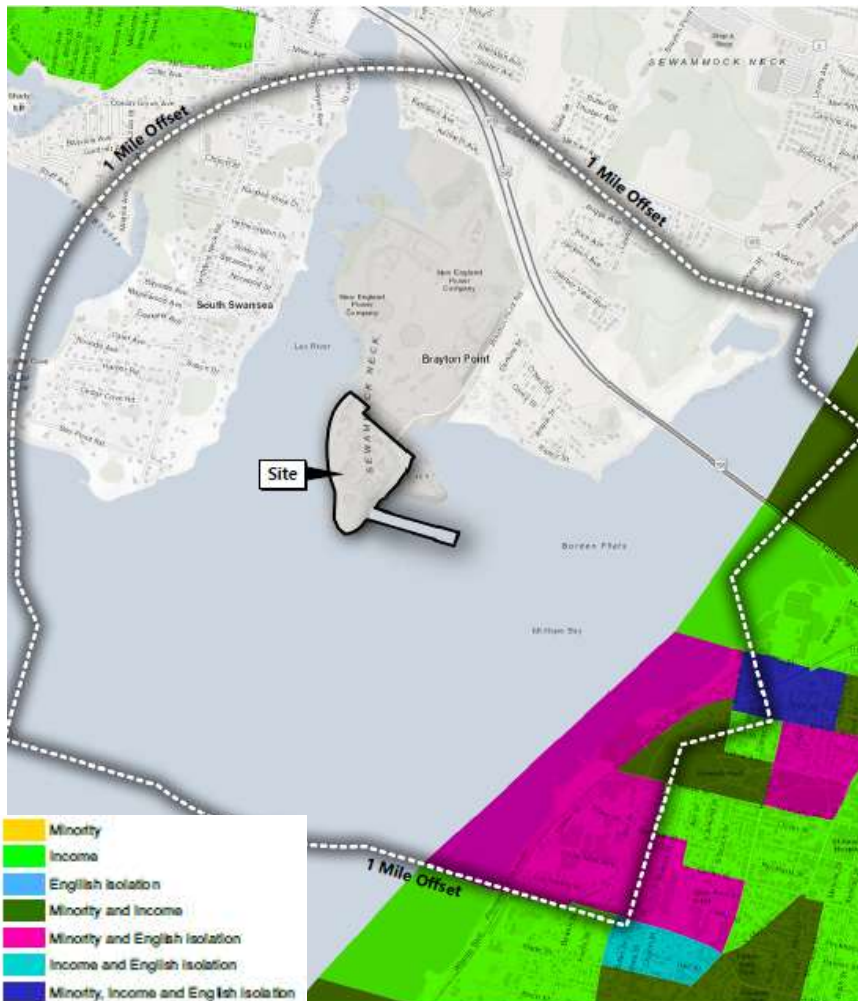
Topic/Impact Category	Finding
<b>Project Description</b>	<ul style="list-style-type: none"> <li>▪ <b>Project advancements</b> since DEIR</li> <li>▪ Marine pilots requested <b>Range Navigational Light</b> for wayfinding</li> <li>▪ <b>Continued agency coordination</b></li> </ul>
<b>Environmental Justice</b>	<ul style="list-style-type: none"> <li>▪ Updated Public Involvement Plan for <b>enhanced outreach</b></li> <li>▪ <b>Clarification of air emissions</b> from vehicles and vessels</li> <li>▪ <b>Project benefits</b> to EJ populations</li> </ul>
<b>Wetlands</b>	<ul style="list-style-type: none"> <li>▪ Reduced <b>Coastal Bank</b> impacts</li> <li>▪ <b>Flow path analysis modeling</b> performed on coastal floodplain fill</li> </ul>



# FEIR Contents & Findings

Topic/Impact Category	Finding
Greenhouse Gas Emissions/ Air Quality	<ul style="list-style-type: none"> <li>▪ <b>Increased energy efficiency</b> and further reduction of stationary source GHG emissions</li> <li>▪ Additional information regarding <b>air emissions from the manufacturing process</b></li> <li>▪ Additional assessment of air quality <b>impacts on EJ populations</b></li> </ul>
Temporary Construction Impacts	<ul style="list-style-type: none"> <li>▪ <b>Construction Management Plan</b> in coordination with Town</li> <li>▪ Assessment of <b>cumulative construction impacts</b></li> <li>▪ Measures to <b>coordinate construction activities</b> with SouthCoast Wind</li> </ul>
Mitigation Measures	<ul style="list-style-type: none"> <li>▪ Summary of <b>comprehensive mitigation plan</b></li> </ul>
Response to DEIR Comments	<ul style="list-style-type: none"> <li>▪ <b>Direct responses</b> to all comments received on the DEIR</li> </ul>

# Environmental Justice Public Involvement Plan



Since DEIR submission:

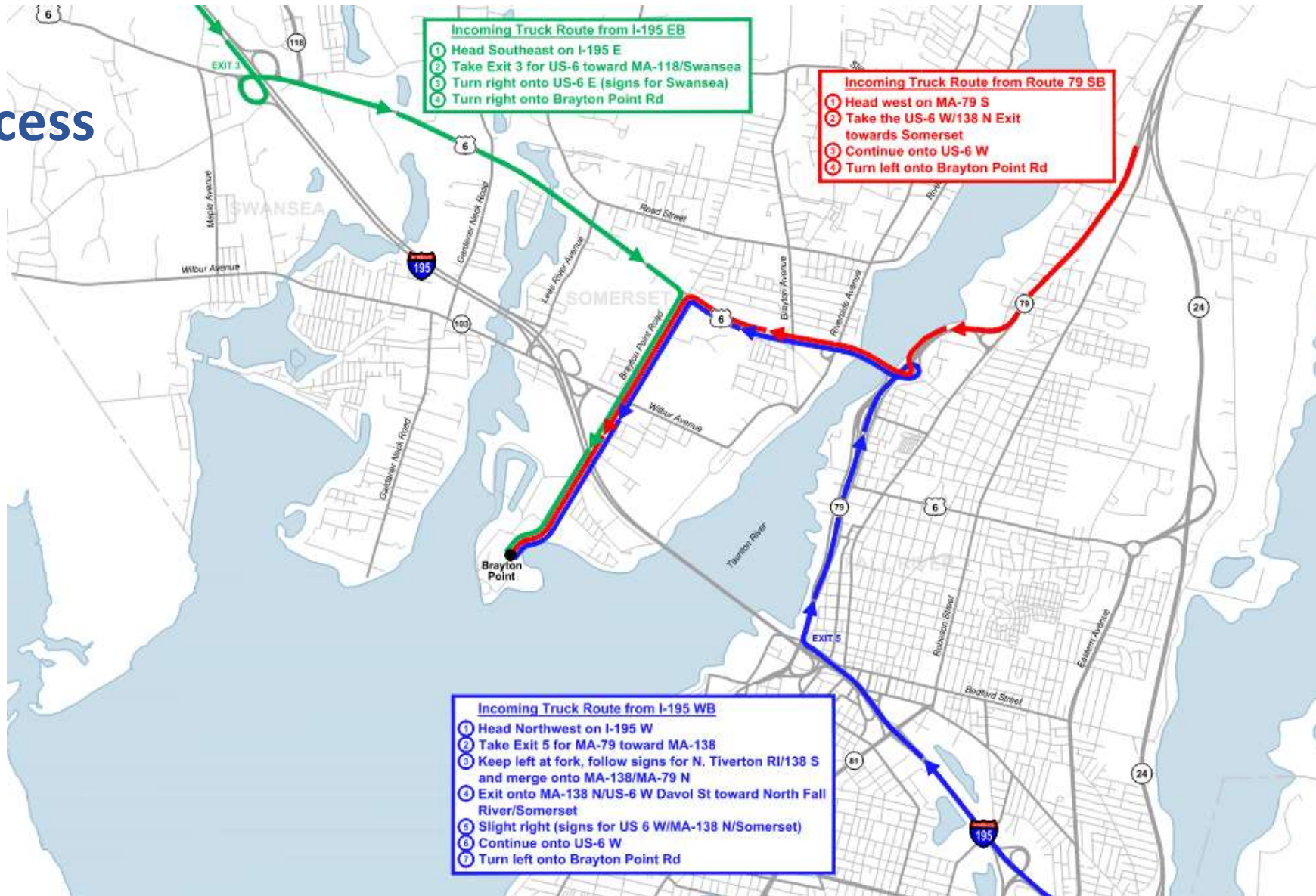
- ❖ DEIR Community Meeting held September 13, 2022 (recorded and broadcast via YouTube)
- ❖ FEIR distributed electronically and posted on project website
- ❖ FEIR hard copy provided to Somerset Library
- ❖ Project update posted to project website (translated into Spanish and Portuguese)
- ❖ Continue to hold regular community outreach meetings
- ❖ Continued coordination with local non-profit and CBOs re: workforce development

# Project-Related Vehicular Traffic





# Project Truck Access



# Greenhouse Gas Emissions

## DEIR GHG Mitigation Commitments:

- ❖ **All-electric building systems; no natural gas usage;** High-quality envelopes in all buildings
- ❖ Installation of 2.6 MW solar array and 80 % solar-readiness
- ❖ 10% EV charging spaces with 90 % EV-ready spaces

= **Office/Employee Space: 61% energy efficiency and 49% reduction in stationary source CO2 emissions**

= **Warehouse/Storage Space: 21% energy efficiency and 5% reduction in stationary source CO2 emissions**

## Additional FEIR GHG Mitigation Commitments:

- ❖ **Office/Employee Support:** Air source heat pump (ASHP) water heating; VRF with energy recovery; ventilation energy recovery to at 70%+ efficiency

= **64% energy efficiency and 53% reduction in stationary source CO2 emissions**

- ❖ **Warehouse/Storage:** ASHP space heating; ventilation energy recovery; reduced lighting power densities

= **38% energy efficiency and 27% reduction in stationary source CO2 emissions**



## Air Quality

- ❖ Low traffic generation = low vehicular emissions of NO<sub>x</sub> and VOC
- ❖ Low vessel trips (approx. 10 per year) = limited air emissions of NO<sub>x</sub> and VOC
- ❖ Cable manufacturing process emissions between 1 and 10 tpy of various air pollutants
- ❖ Requires a **Limited Plan Approval Air Permit** from MassDEP
- ❖ Include a detailed assessment of process emissions





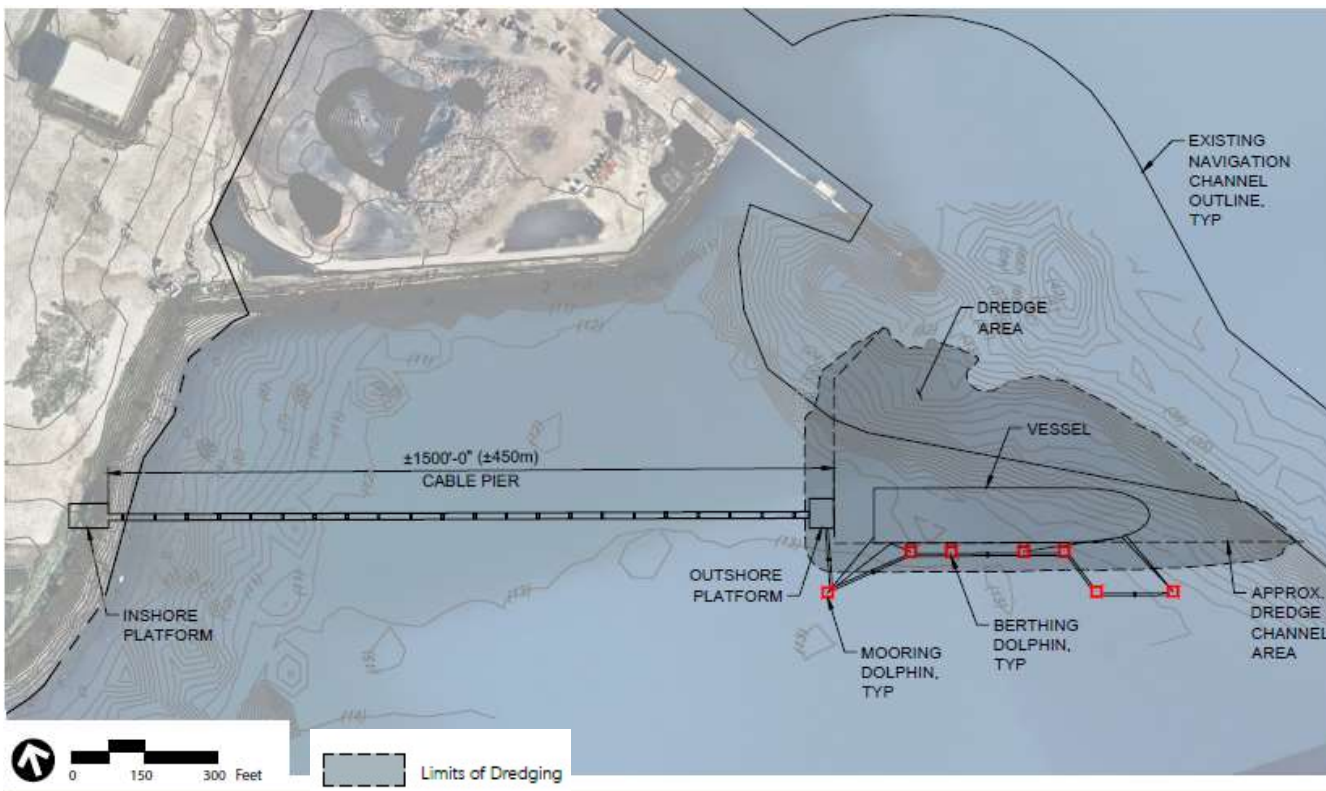
# Noise

- ❖ Project will submit all required air/noise permitting through MassDEP
- ❖ In response to local concerns, will continue to evaluate noise levels
- ❖ Project will have onsite contact person to respond to questions or comments from the public



# Dredging for Docking Facility

## Long Pier with No Turning Basin Design Option



- ❖ 160,000 cubic yards of material to be removed
- ❖ ~70% reduction in dredge volume vs. previous design options evaluated
- ❖ Decreases disposal volume of dredge material
- ❖ Minimizes dredge area outside the Designated Port Area
- ❖ Will not adversely affect navigational channel operations

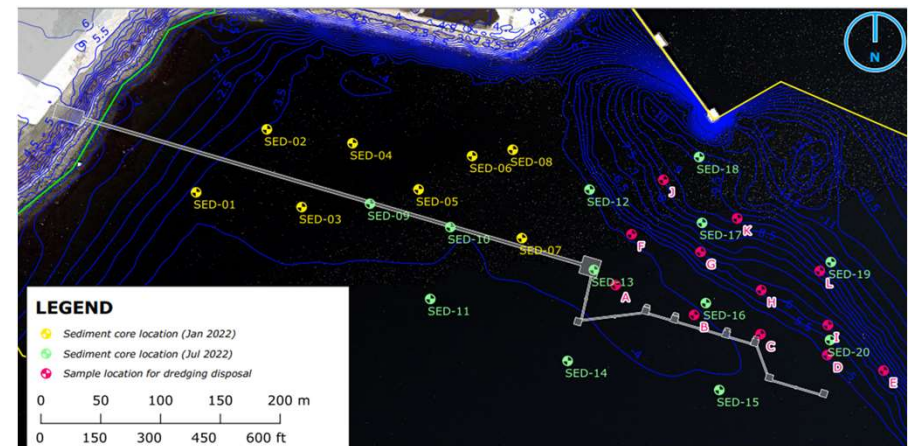
# Site Investigation

## ❖ Land-Based Environmental Investigation

- 275 on-site soil borings
- 26 on-site permanent environmental monitoring wells installed

## ❖ Marine Sediment Investigation

- 20 Sediment cores (preliminary environmental characterization)
- 12 Sediment cores (disposal disposition)





# Site Investigation

## ❖ Land-Based Environmental Investigation Findings:

- Very few exceedances of MCP Reportable Concentrations in soil or groundwater
  - Metals primarily low levels site-wide
  - 13 locations in soil, and 2 in groundwater with analytes above reportable levels

## ❖ Marine Investigation

- Inorganics (metals) were the most commonly detected analyte
  - No organic compounds were detected in exceedance of applicable regulatory limits
- Likely dredge disposal approach:
  - 80% Open-ocean disposal (RI Sound Disposal Site or Cape Cod Bay Disposal Site)
  - 20% Beneficial Reuse (daily cover soil at a licensed landfill)

## Temporary Construction Impacts

- ❖ Minimal potential cumulative impacts anticipated
- ❖ Construction Mitigation Measures will be implemented during construction of all phases of Prysmian's Project to minimize construction and traffic related impacts to adjacent residential areas and EJ populations
- ❖ Ongoing Coordination with Town, the public, SouthCoast Wind Project and CDC
- ❖ The Project will undergo review by several Town of Somerset boards, which may impose additional construction mitigation commitments

## Construction – Temporary Concrete Mixing Equipment



- ❖ Required on-site for construction of the Manufacturing Tower and pouring building foundations
- ❖ All equipment **will be removed** once completed
- ❖ Will be located **exclusively on-site** for its use only and for no other purposes or users
- ❖ Transportation of fly ash to the site will be in **enclosed tanks trucks** and will remain **in sealed containers** within the concrete mixing equipment



## Somerset Approvals Next Steps

### Notice of Intents:

- ✓ Initial Dredging Sampling: Approved 6/22/22
- ✓ Full Dredging Sampling: Approved 12/1/22
- ✓ Site Development: Submitted December 1, 2022

### Preliminary Subdivision Plan Review:

- ✓ Submitted December 1, 2022

### Development Plan & Zoning Variance Review:

- ✓ Submitted December 15, 2022

### Definitive Subdivision Plan Review:

- ☐ Submission: Early-March 2023

## Fall River Approvals Next Steps

### Notice of Intent:

- ☐ Navigational Range Light Submission: April 3, 2023

## Federal Permitting Next Steps

### FAA Airspace Review:

- ✓ Submission: August 2022
- ☐ Anticipated Approval: February 2023

### USACE Individual Permit Application:

- ☐ Submission: October 2023
- ☐ Anticipated Approval: September 2024

## State Permitting Next Steps

### MassDEP Waterways Chapter 91 License:

- ☐ Submission: Late-February 2023
- ☐ Anticipated Approval: March 2024

### MassDEP 401 Water Quality Certification:

- ☐ Submission: October 2023
- ☐ Anticipated Approval: March 2024



An aerial rendering of a coastal industrial facility, possibly a desalination plant or refinery, situated on a peninsula. The facility features a tall white distillation column, several large industrial buildings with solar panels on their roofs, and a large circular storage tank. A long pier extends from the land into the water, where a large blue and white ship is docked. The surrounding area is lush with green trees and vegetation, with a residential neighborhood visible in the background. The sky is blue with scattered white clouds.

Thank you!  
Discussion & Questions